

MAKE YOUR OWN

# CHRISTMAS TREE

## MATERIALS NEEDED

- Paper
- Pipe cleaners (Pick your colours!)
- Glue gun/Art glue

## INSTRUCTIONS

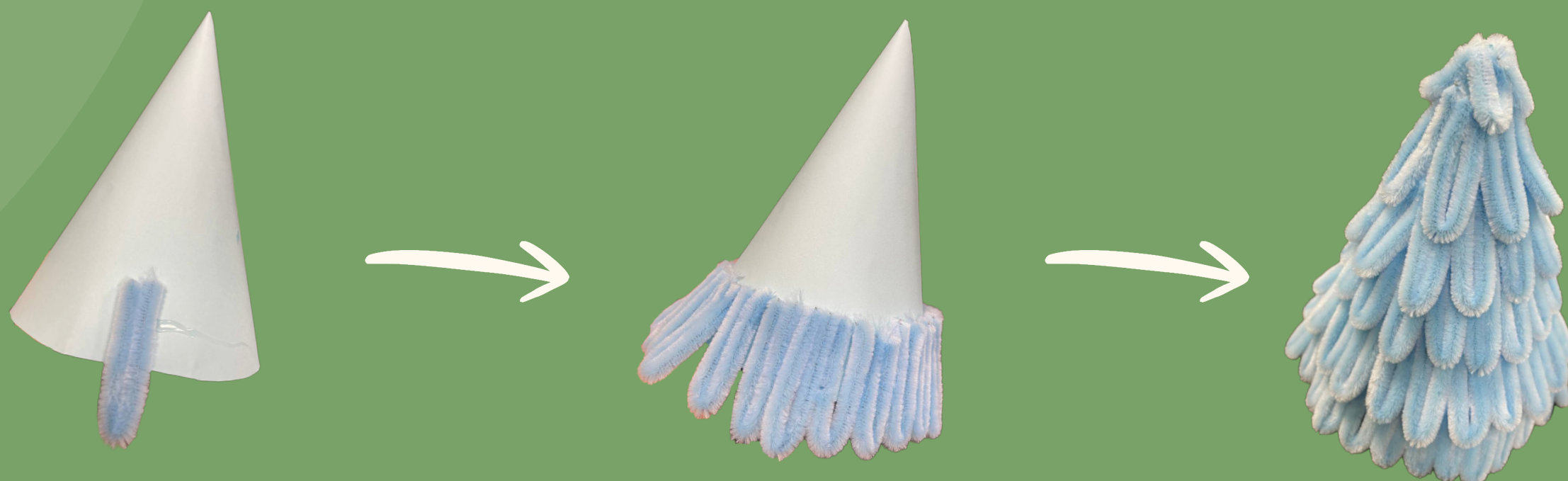
**1** Make a cone with the paper.



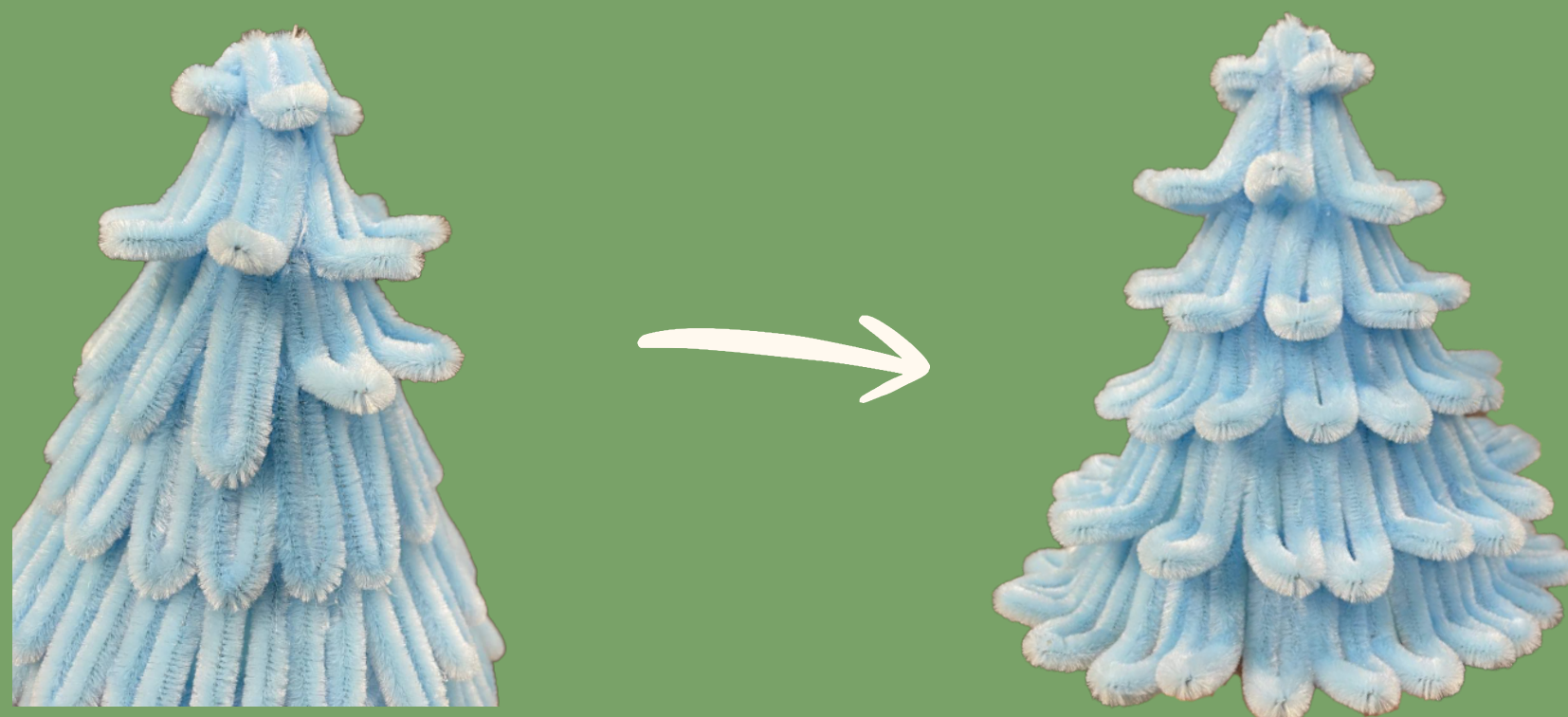
**2** Cut one pipe cleaner into 4 and fold each part into a U-shape.



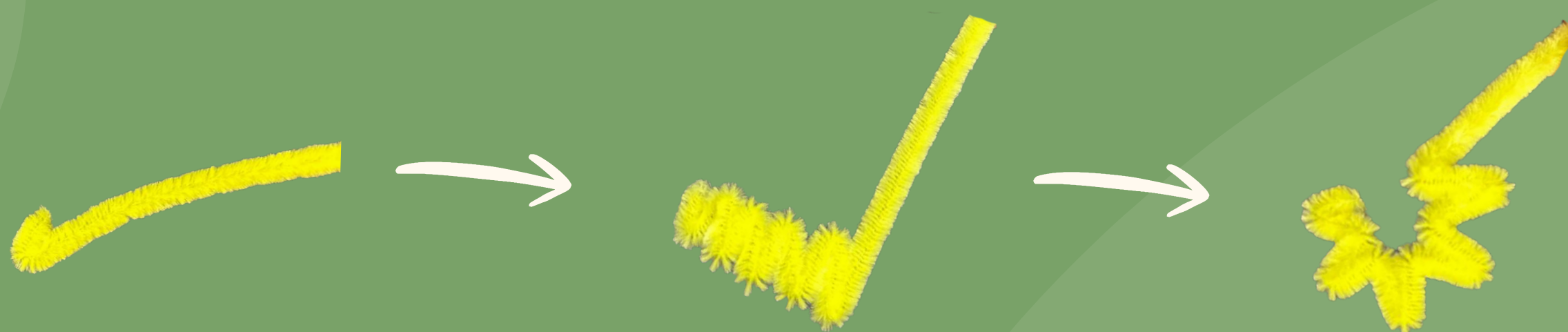
**3** Glue each part onto the cone.



**4** Fold each leaf up to make a curl.



**5** To make a star, make small folds using a pipe cleaner.





**6** Cut off the excess and glue the ends together.



**7** Glue the star to the tree and you're done!

**OPTIONAL STEPS:**

optional materials needed:

- Decorative beads

**8** Glue beads onto the tree to decorate.

  
*Merry  
Christmas*



FROM THE AUTISM COLLABORATIVE!